

GENERAL INFORMATION

Before product selection, we recommend reading the following technical sheet:

[IG 01 – GENERAL INFORMATION LISTONE GIORDANO](#)

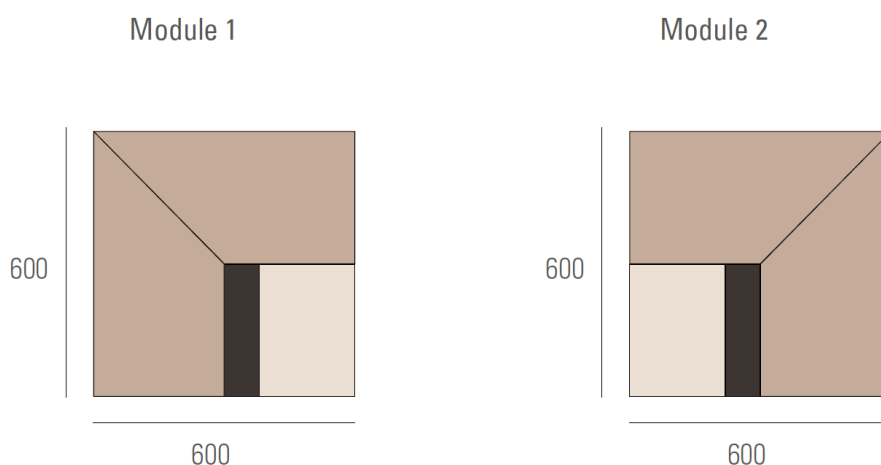


LISTONE GIORDANO® NATURAL GENIUS FACTUM | Design Dante Oscar Benini

High-end two-layers engineered floor covering with a top layer and crossed-fibres plywood support.
 Listone Giordano® Natural Genius Factum is offered in square modules able to create endless compositions.

SPECIFICATIONS

Listone Giordano® Natural Genius Factum is available in modular floor covering version complying to the European Norm UNI EN 14354 “Wood based panels – Wood veneer floor coverings”.

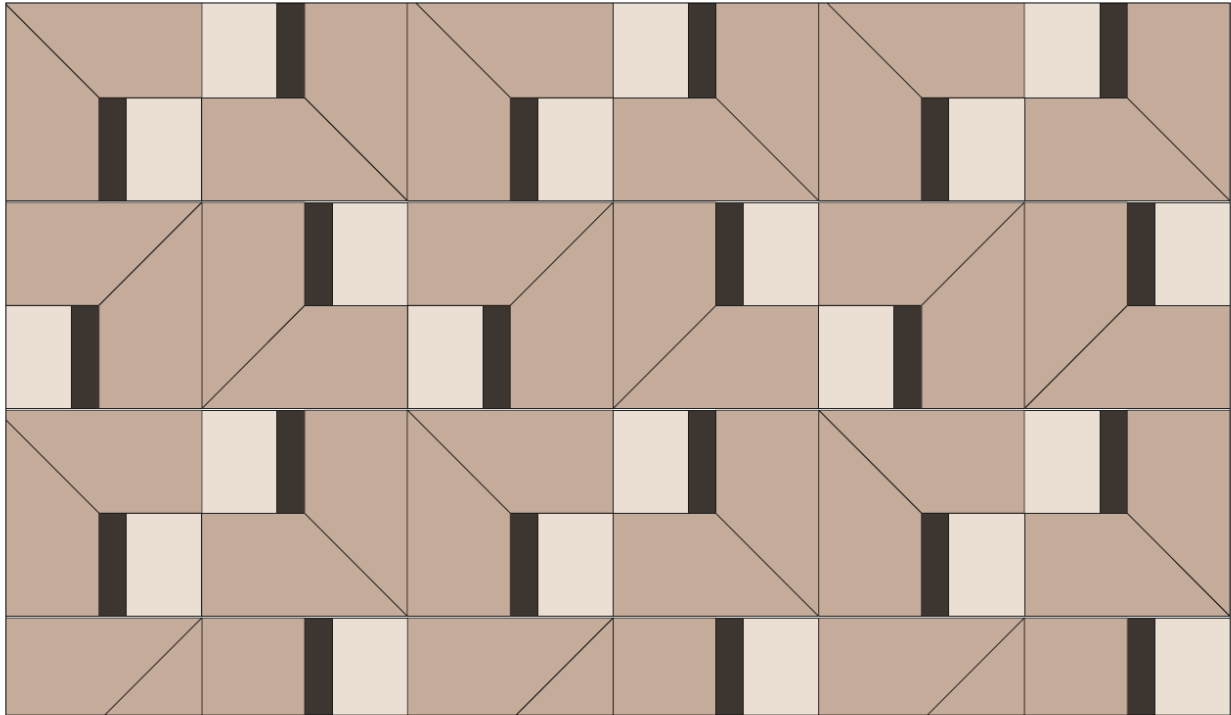


TOTAL THICKNESS	13 mm
TOP LAYER THICKNESS	1 mm of Oak veneer
WEIGHT	9 Kg/m ²
SUPPORT	multilayer counterbalanced
INSTALLATION SYSTEM	glued
PROFILE	each individual module is groove profiled on four sides split tongues are supplied with the flooring to join the modules microbevelled on all 4 edges and on the boards into the modules
TOP-SUPPORT LAYER GLUING	Conforms to the requirements of the <i>class D4 of the UNI EN 204 regulation</i> Conforms to the requirements of the <i>JAS type II norm</i> (cycle made of 2 h in hot water at 70°C and then immediately 3 h in an airy stove at 60°C)

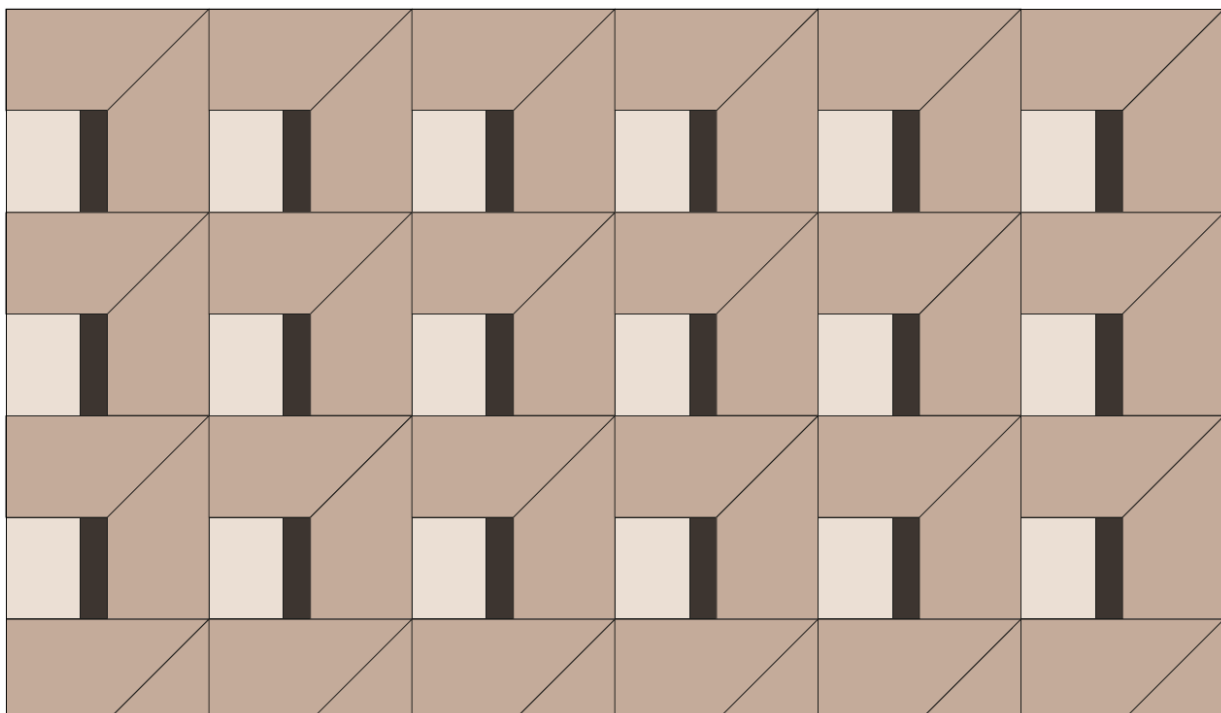
To verify the availability of the various versions of Listone Giordano® products, consult the current Price list.

INSTALLATION PATTERNS

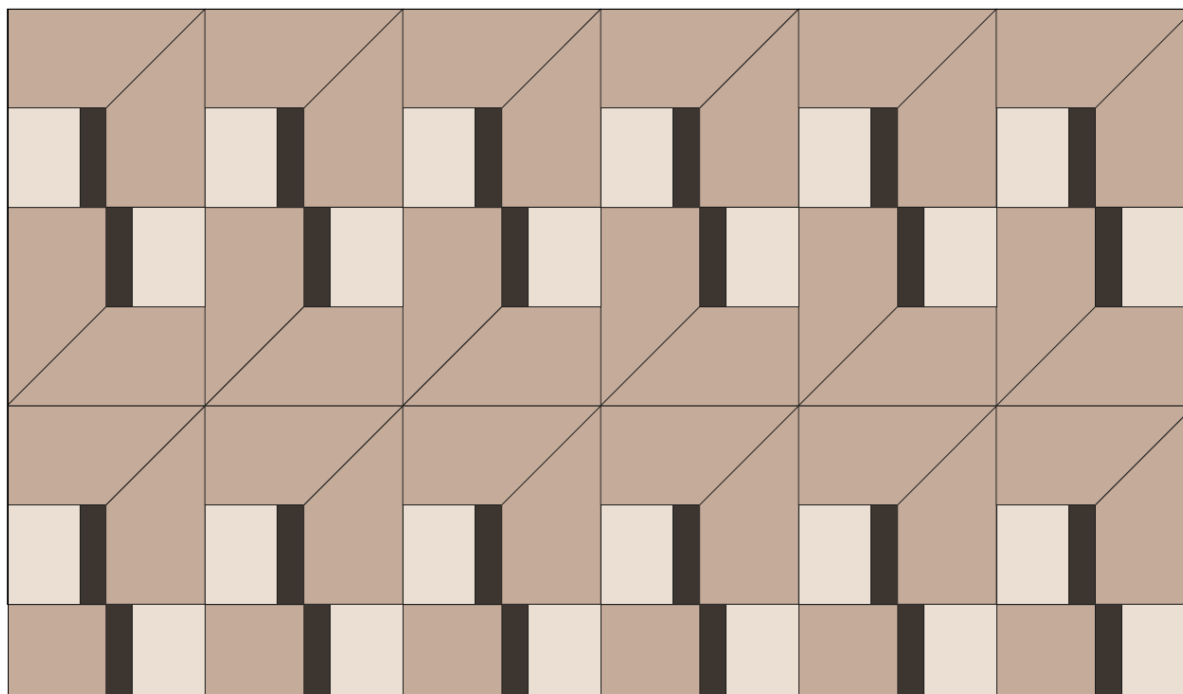
N.1



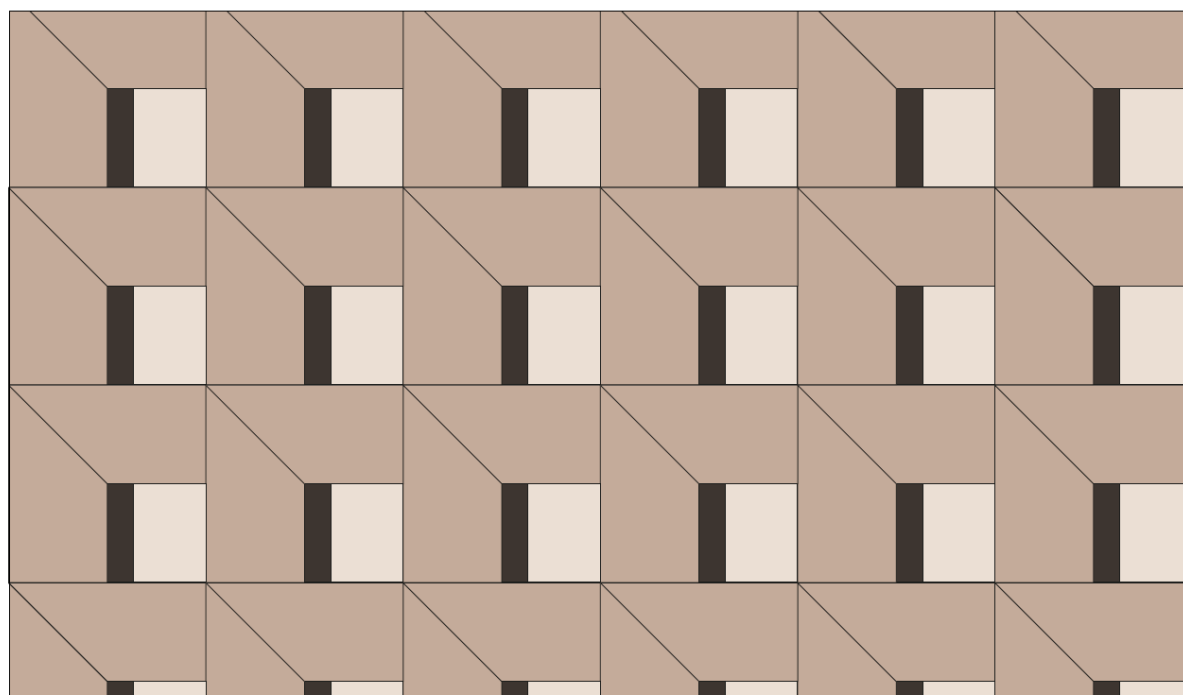
N.2



N.3



N.4



Waste due to elements' perimetric cutting is calculated between 5% and 10% though percentage may slightly vary according to dimension and shape of the surface area to be laid.

Our technical department is available, on the basis of CAD drawings provided by the client, to elaborate the floor plan drawings and detailed list of the number of modules required for flooring installation.

GRADES

Listone Giordano® Natural Genius Factum products are available in the following grade:

- Rigata

To know the necessary information about grades see the appropriate sheet:

[**GC 01 - GRADES LISTONE GIORDANO**](#)



FINISHES AND SURFACE PROCESSING

Listone Giordano® Natural Genius Factum products are available with the following finish:

- NaturPlus2 Matt

To know the necessary information about finishes and surface processing see the appropriate sheet:

[**FP 01 - FINISHES AND SURFACE PROCESSING LISTONE GIORDANO**](#)



INSTRUCTIONS FOR INSTALLATION

The installation of the Listone Giordano® Natural Genius Factum products can only be glued down.

To know the necessary information about laying see the appropriate sheet:

[**DL 01 - INSTRUCTIONS FOR INSTALLATION LISTONE GIORDANO**](#)



CLEANING, USE AND MAINTENANCE

The Listone Giordano® Natural Genius Factum product finishes need specific cleaning and maintenance, in accordance with appropriate instructions to be taken into account.

To know the necessary information about cleaning, use and maintenance see the appropriate sheet:

[**CM 01 - CLEANING, USE AND MAINTENANCE LISTONE GIORDANO**](#)



CERTIFICATIONS



BIOSPHERA

Biosphera is a marking system based upon Listone Giordano®'s green procurement policy to provide consumers with brief, clear and useful information on the origin of raw materials. Many products of the collection Listone Giordano® offer both in their top layer and in their support the *Biosphera certified* mark that identifies raw materials whose forestry management is certified according to recognized standards at the international level (FSC®, PEFC, SFI, OLB, LEI, etc.) or the *Biosphera controlled* mark that identifies raw materials whose legal sourcing and forestry management, although not yet certified, is backed up by specific audit and related papers.



FSC®

FSC® is dedicated to the promotion of responsible forest management worldwide. Ask for FSC® certified products.



PEFC

Chain-of-Custody Certification, which guarantees that products are sourced from sustainably, managed forests.



CE MARK

All the products of the collection Listone Giordano® strictly comply to all CE rules regarding hardwood floors.



TOY CERTIFICATION

All the Listone Giordano® finishes are approved according to standard EN71-3 which assures fitness for use in children's toys.



AIR EMISSIONS

French certification of Emissions of Volatile Organic Compounds. All Listone Giordano® products tested according to n°2011-321 French Decree have attained A+ rating, the highest among those in the Decree.



FORMALDEHYDE

All the products of the collection Listone Giordano® comply to the class E1, which is amongst the strictest European regulations (UNI EN 14342).

US TSCA

CARB2 / TSCA TITLE VI CERTIFICATION

All plywood panels used for the manufacturing of Listone Giordano® floors meet the requirements established by US TSCA Phase 2 standards for Formaldehyde emissions with limits lower than the most restrictive European class, that's to say the E1.



F-4 STARS

Listone Giordano® wood floors comply to the most restrictive class F**** classification system on formaldehyde emissions defined by the Japanese Ministry of Land, Infrastructure, Transport and Tourism (MLIT).



ANTI-BACTERIAL FINISH CRYSTALCARE

All the XPlus2, NaturPlus2, NaturPlus2 Matt, MattPlus, Invisible Touch and Oleonature finishes are antibacterial certified by CATAS S.p.a. laboratories according to ISO 22196:2007 regulation.



TÜV PROFICERT - PRODUCT INTERIOR

It certifies that all the Listone Giordano® 2-layer wood floors are complaint with the most stringent health and quality criteria selected by TÜV HESSEN (PREMIUM level).

It's a voluntary certification specifically developed for construction products for interiors.



ISO 9001

Quality Management System certification.

ISO 14001

Environmental Management System certification for the Miralduolo di Torgiano (PG) factory.



ISO 45001

Certification of Occupational Health and Safety Management System.

MADE IN

All the products of the collection Listone Giordano® are Made in Italy.

TS 22 – December 2023